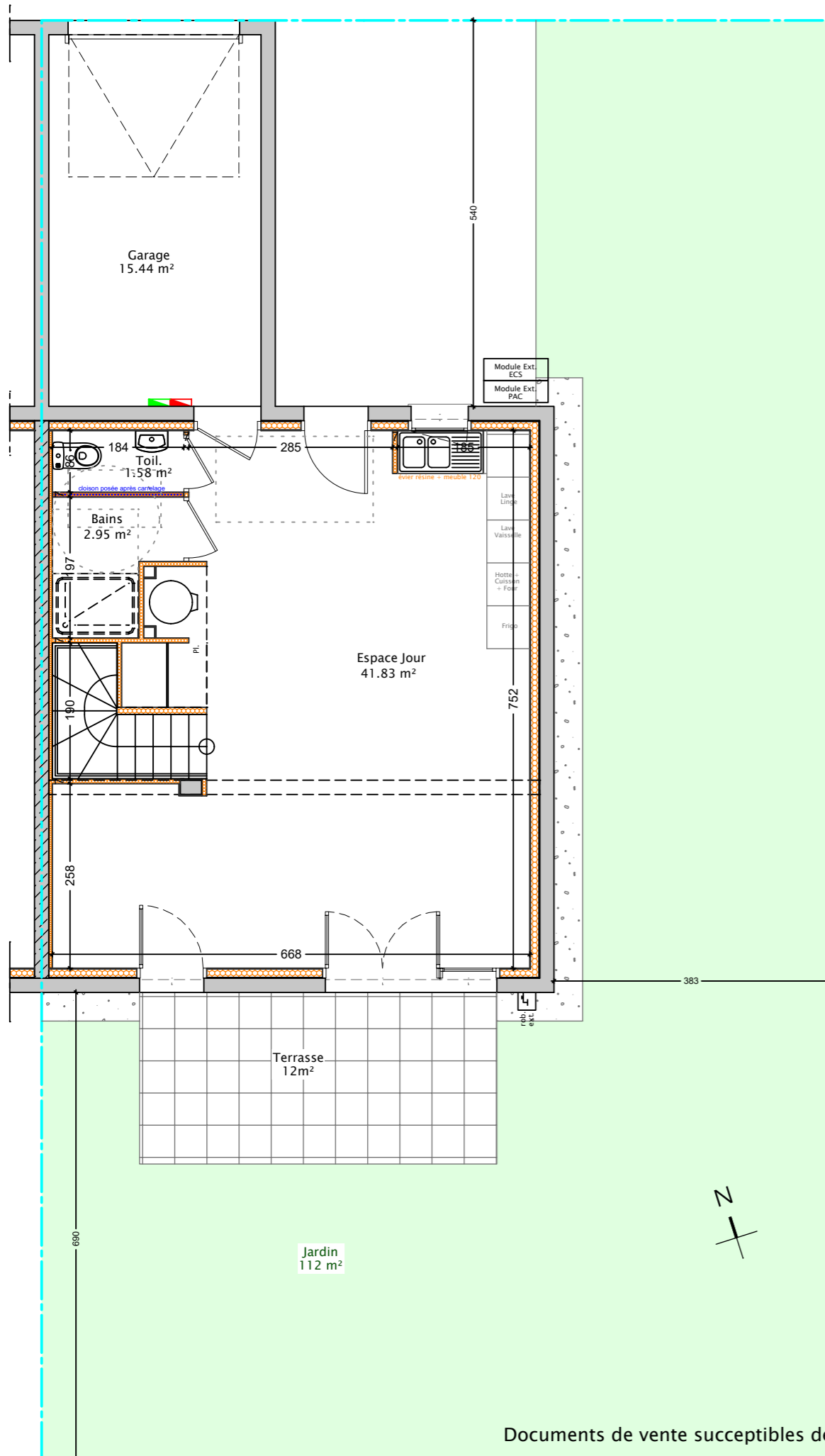
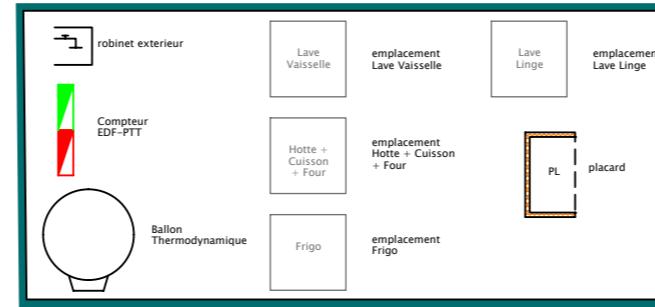


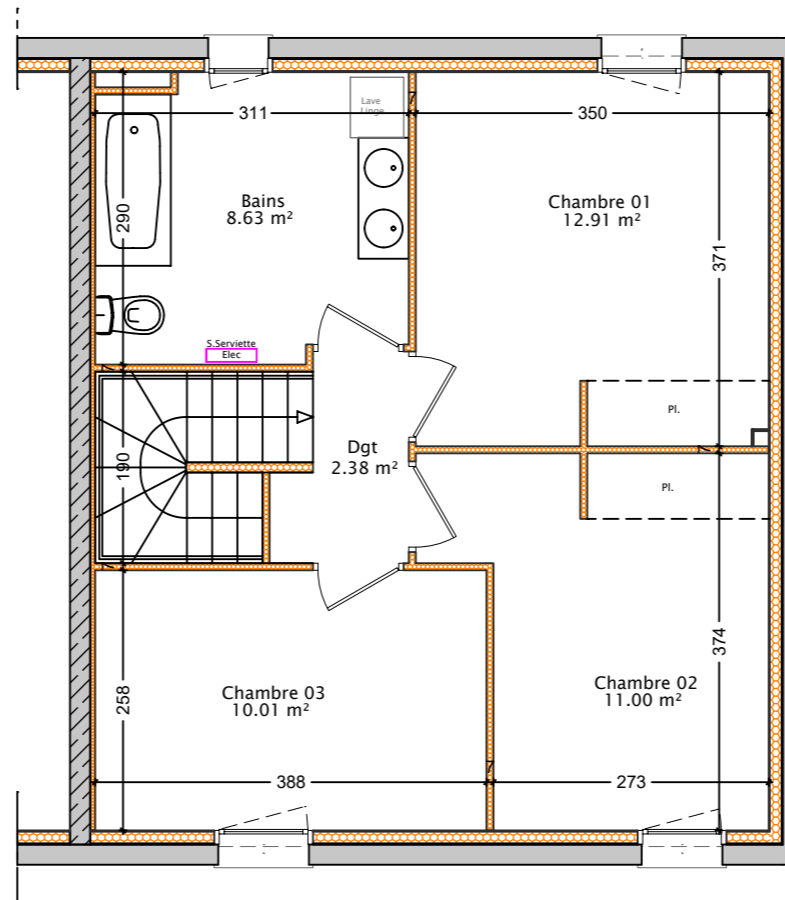
Plan Rez de Jardin – Ech. 1/75°



Légende



Plan Etage R+1 – Ech. 1/75°

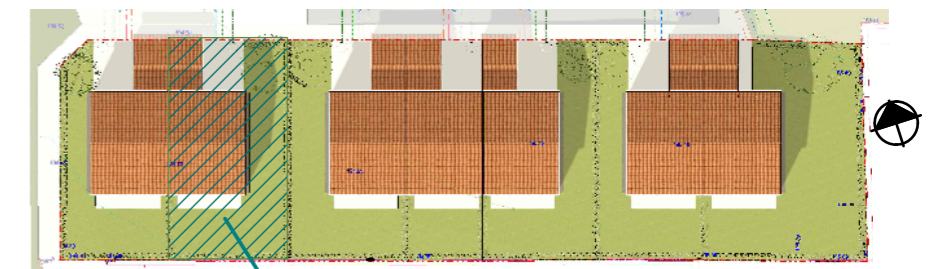


Plan de Vente – Lot 03f

31.10.2023

rue des Morels – Lot 03
71 570 St Symphorien d'Annelles

RE 2020
RÉGLEMENTATION ENVIRONNEMENTALE



Lot 03f – T4

Rez de Jardin :

- Espace Jour 41.83 m²
- Bains 2.95 m²
- Toil. 1.58 m²

Etage R+1

- Dgt 2.38 m²
- Bains 8.63 m²
- Chambre 01 12.91 m²
- Chambre 02 11.00 m²
- Chambre 03 10.01 m²

Total Habitable : 91.29 m²

Exterieurs :

- Garage 15.44 m²
- Terrasse 12 m²
- Jardin 112 m² environ

apricot
immobilier